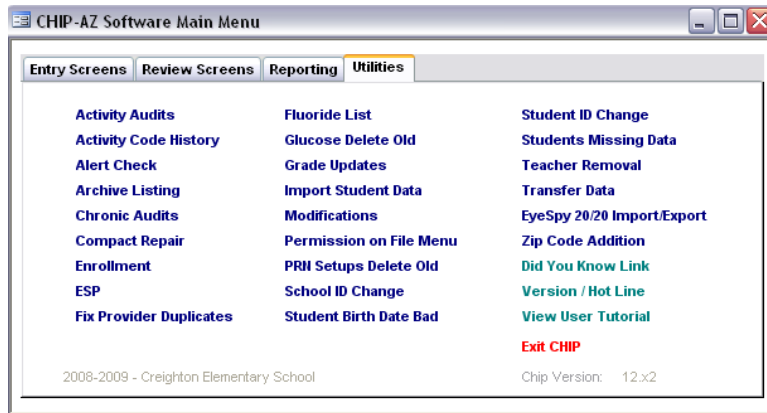


## EyeSpy 20/20 CHIP-AZ Processing

**Overview:** CHIP-AZ has two primary capabilities relating to EyeSpy;

1. [Import](#) **Initial** screening Vision records from EyeSpy, translate values, validate and load into CHIP vision.
2. [Export](#) a list of currently enrolled students (along with their student id) to be imported into EyeSpy.
3. EyeSpy instructions may be found at <http://www.visionquest2020.org/tools-and-training/training-materials.html>  
Select Import & Export Student Data.

### CHIP-AZ Main Menu

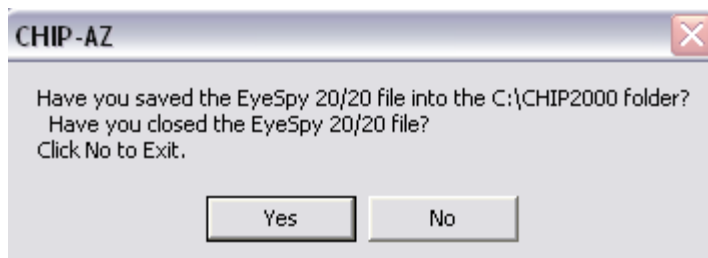


### Import from EyeSpy

1. Create the EyeSpy 20/20 export file VQ4CHIP.csv using EyeSpy.
2. Copy the file VQ4CHIP.csv from the EyeSpy computer to the computer running CHIP-AZ. Be sure to place the file VQ4CHIP.csv in the C:\CHIP2000 folder.
3. Select EyeSpy 20/20 Import/Export from CHIP Utilities menu to display the following screen.



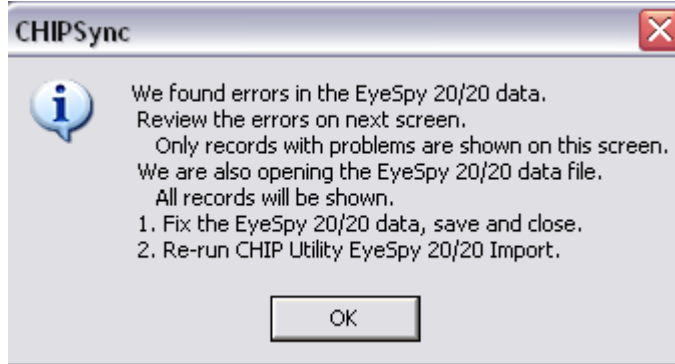
4. Click "Yes" to import records. Click "No" to proceed to the Export from CHIP-AZ.



## EyeSpy 20/20 CHIP-AZ Processing

- Click "Yes" if you have performed the steps above.

If we found errors...



- The errors we found are displayed.
  - CTDS is blank or wrong for this school.
  - Initial screen already exists in CHIP.
  - ID does not exist in CHIP or is blank.
  - Screen date is prior to beginning date of this school year.

errAny	errExists	CTDS	errCTDS	IDc	errID	Name	DOB	Date	errDate
Y		070414110		123	Student Id not a	Amack, Tierra	9/12/2002	2/25/2009	
Y	Initial Screen already exists	070414110		10		Amack, Tierra	9/12/2002	2/25/2009	
Y	Initial Screen already exists	070414110		89198		Arambula, Israel	5/19/2000	3/2/2009	
Y		070414110			Student Id not a	Barradaz, Karla	4/24/2003	2/13/2009	
Y		070414110			Student Id not a	Bautista, Antho	4/17/2003	2/5/2009	
Y		070414110			Student Id not a	Bautista, Antho	4/17/2003	2/13/2009	

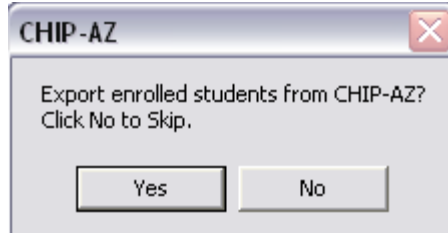
- The ES Export file, VQ4CHIP.csv is opened.

	A	B	C	D	E	F	G	H	I	J	K	L	M
1	CTDS	Date	Last	First	DOB	ID	Result	Glasses	Both Eyes	Right Eye	Left Eye	Stereopsis	Right Eye
2	70414110	2/25/2009	Amack	Tierra	9/12/2002	10	FAIL	None				pass	pass
3	70414110	2/25/2009	Amack	Tierra	9/12/2002	123	FAIL	None	Fail	PASS (20/ FAIL - slow response time			
4	70414110	3/2/2009	Arambula	Israel	5/19/2000	89198	FAIL	None	PASS (20/PASS (20/ FAIL (unable to see 20/32)				
5	70414110	2/13/2009	Barradaz	Karla	4/24/2003		FAIL	None	Verified Cc	FAIL (unable to see 20/40)			
6	70414110	2/5/2009	Bautista	Anthony	4/17/2003		FAIL	Wearing	PASS (20/ FAIL (unable to see 20/40)				
7	70414110	2/13/2009	Bautista	Anthony	4/17/2003		PASS	Wearing	PASS (20/ PASS (20/ PASS (20/40 or better)				
8	70414110	2/5/2009	Belmontes	Mauricio	7/20/2003		PASS	Lost / Brok	PASS (20/ PASS (20/ PASS (20/ PASSED near test				

- User may correct entries in ES, re-export and re-process in CHIP.
- User may correct entries in ES export file and re-process in CHIP.

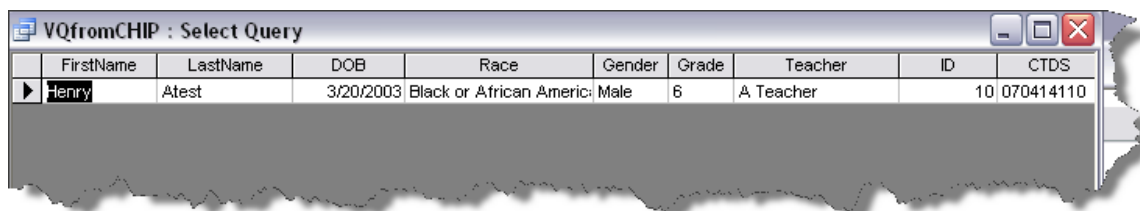
## EyeSpy 20/20 CHIP-AZ Processing

### Export from CHIP-AZ

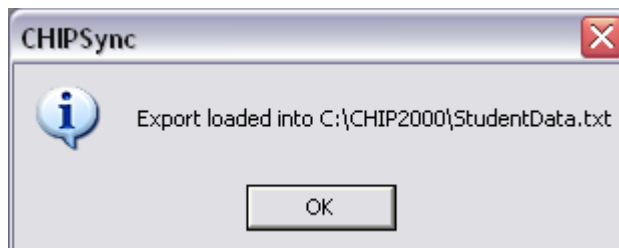


1. Click "Yes" to export.

*Exported records are displayed.*



2. Close the query.



3. Click "OK" to close the message box.
4. Copy the file StudentData.txt from the C:\CHIP2000 folder to the EyeSpy computer and follow your EyeSpy instructions.
5. EyeSpy instructions may be found at <http://www.visionquest2020.org/tools-and-training/training-materials.html> Select Import & Export Student Data.