

Compact & Repair CHIP-AZ and Backup

Why compact CHIP-AZ?

Without getting technical, CHIP-AZ will become very ill if you don't. You could loose some or all of your data.

How Often?

Once a week is adequate for the program file.

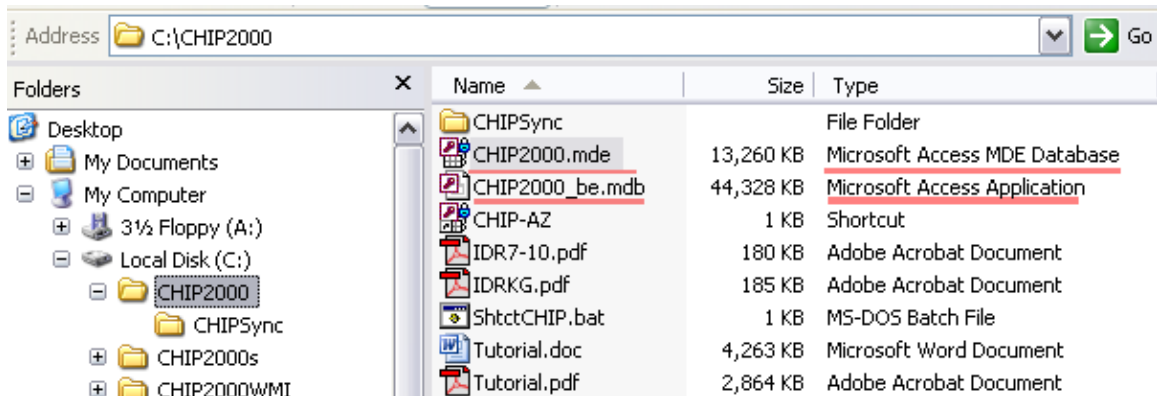
Nightly, as part of Backup/Compact, is recommended for the data file.

CHIP-AZ contains two key files:

- [CHIP2000.mde](#) The "PROGRAM" file which is described as file Type Microsoft Access MDE Database.
- [CHIP2000_be.mdb](#) The "DATA" file which is described as file Type Microsoft Access Application.

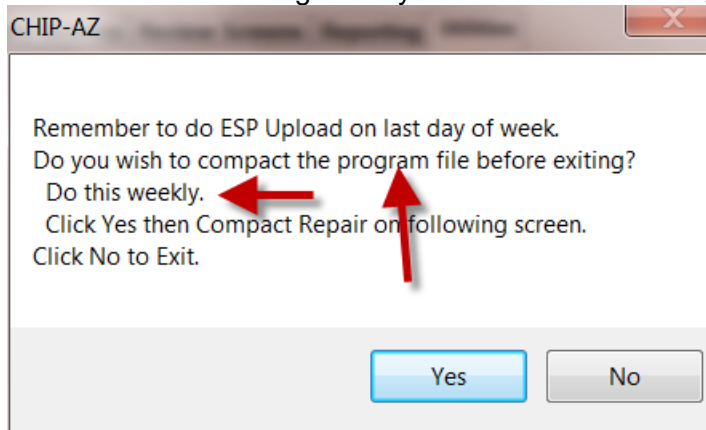
Both need to be compacted.

By default, these files are located in the C:\CHIP2000 folder. If you do not find CHIP2000_be.mdb you will need assistance from your network technician.

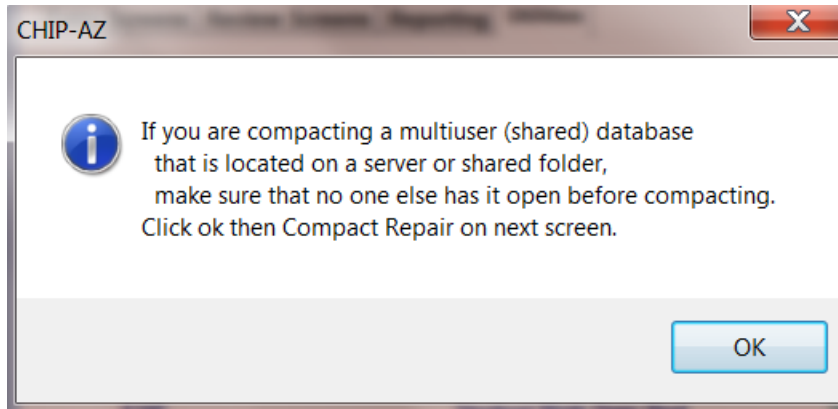


Compact of CHIP2000.mde, the "PROGRAM" file, is performed by one of three methods:

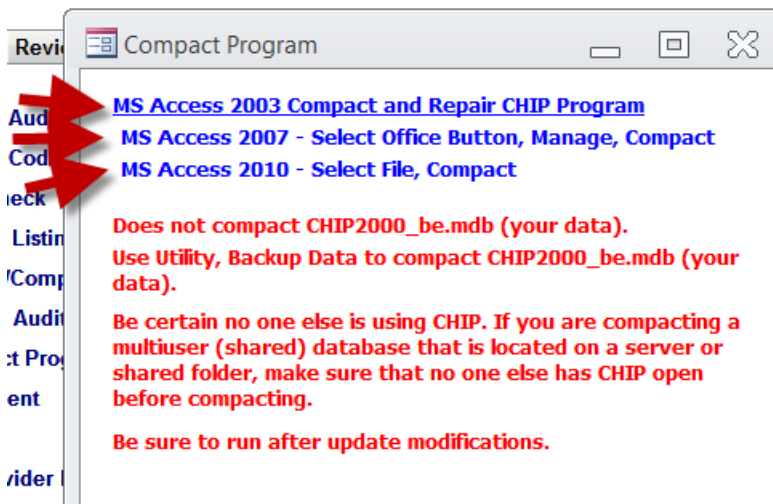
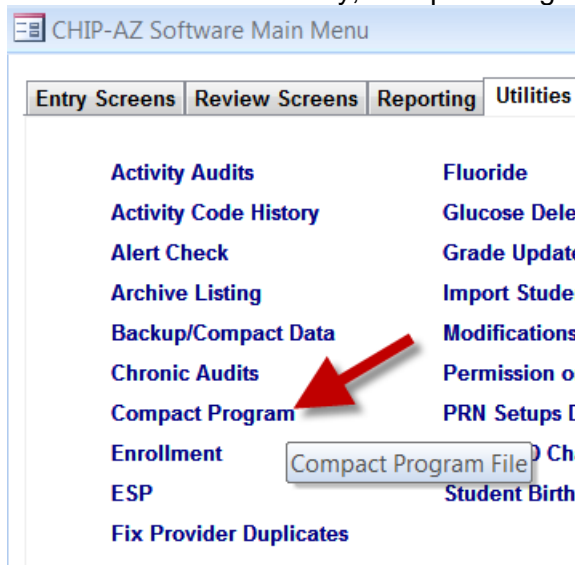
1. Method 1 - When exiting CHIP you will see the following message.



Compact & Repair CHIP-AZ and Backup



2. Method 2 - Use CHIP Utility, Compact Program

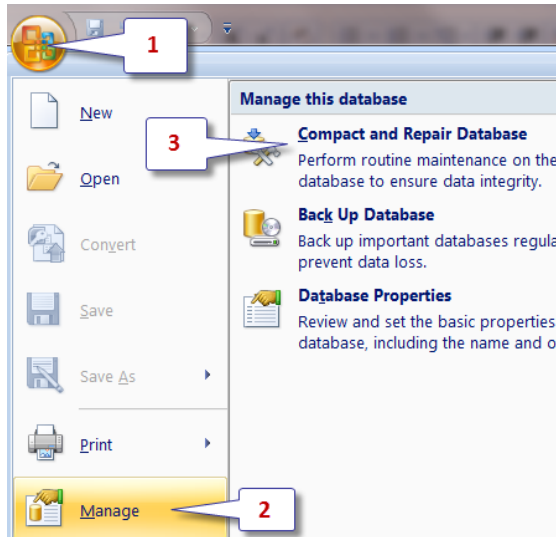


Depending on your version of Microsoft Access, you will make the selection indicated above.

Compact & Repair CHIP-AZ and Backup

Note: This utility compacts only your program file CHIP2000.mde.

3. Method 3 - If MS Access 2007 - From within CHIP-AZ by clicking Office Button, Manage, Compact and Repair Database.



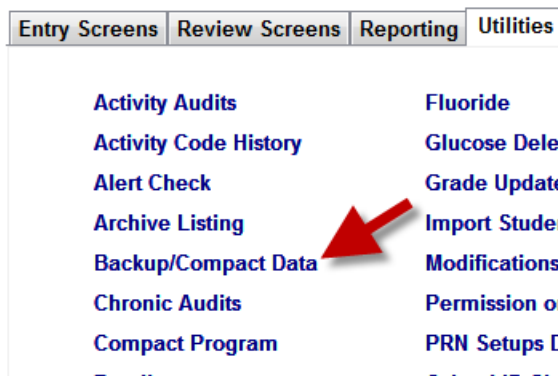
Note: If running Microsoft Access 2010 or newer, things are different.
MS Access 2010 - **Select** File, Compact & Repair Database (program).

Note: This utility compacts only your program file CHIP2000.mde. Need to compact your data? Go to [Compact Data CHIP2000_be.mdb](#) below.

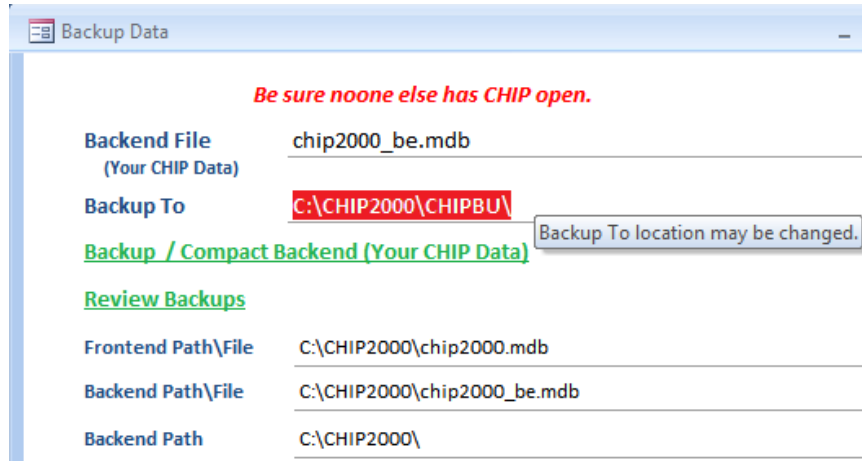
Compact of CHIP2000_be.mdb, the "DATA" file, is performed differently by one of two methods:

Note: This utility backs up and compacts only your **data** file CHIP2000_be.mdb.
Backup Data should be performed nightly.

1. Method 1. CHIP-AZ Utility, Backup/Compact Data

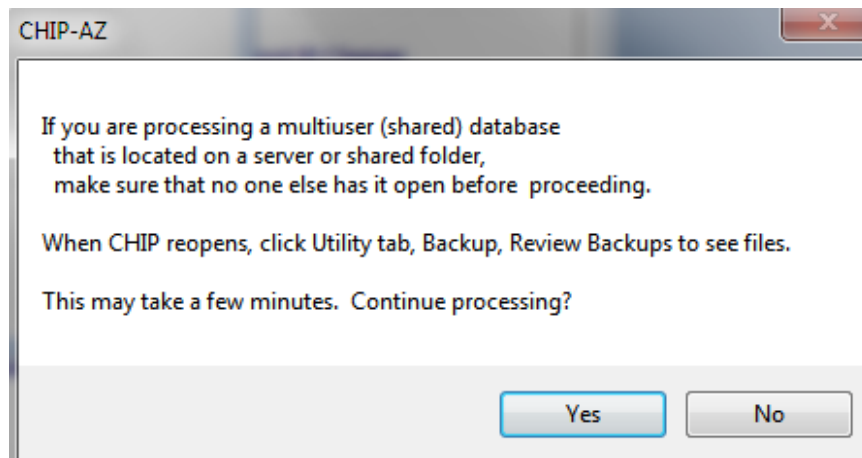


Compact & Repair CHIP-AZ and Backup

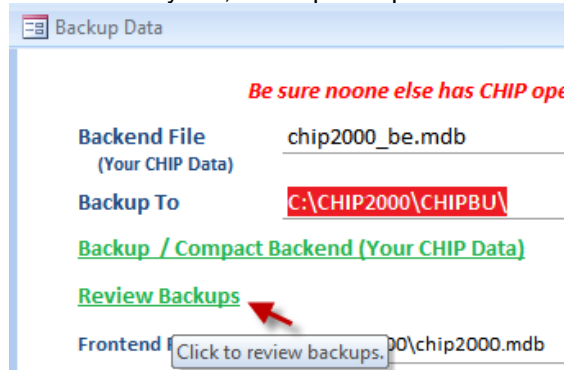


When opened, the screen will show locations as above. "Backup To" location may be changed. Click [Backup / Compact Backend \(Your CHIP Data\)](#) to begin.

You will see the following message box. Once you are certain no one else has CHIP open, click Yes to continue.



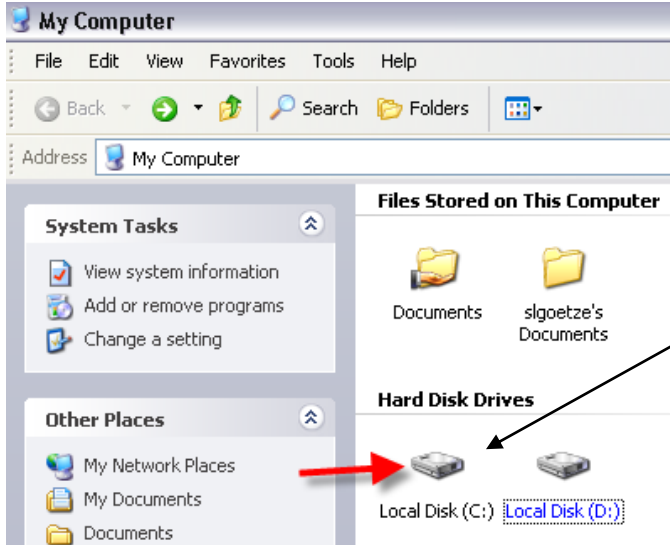
Processing will take a minute or so. CHIP will **reopen** when backup and compact is complete. Login and select Utility tab, Backup/Compact Data.



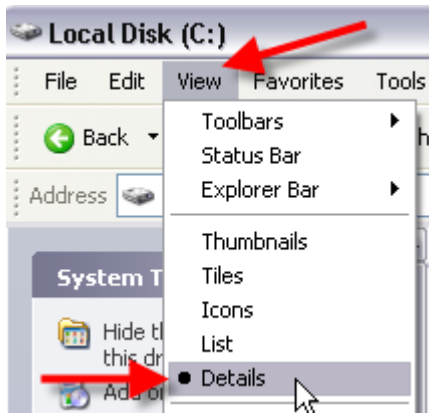
Click [Review Backups](#) to see results, if you wish.

2. Method 2.

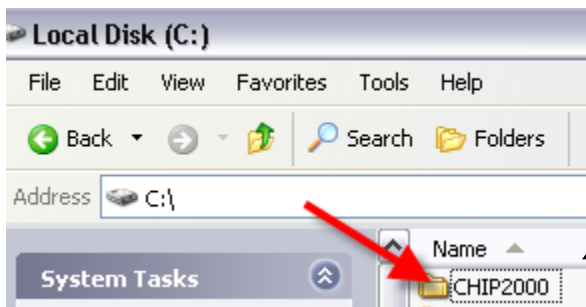
- CLOSE CHIP-AZ and all open applications!!**
- From the Desktop we open the **My Computer** icon.
- Next page.



Expand the Local Disk (C:) with double click.



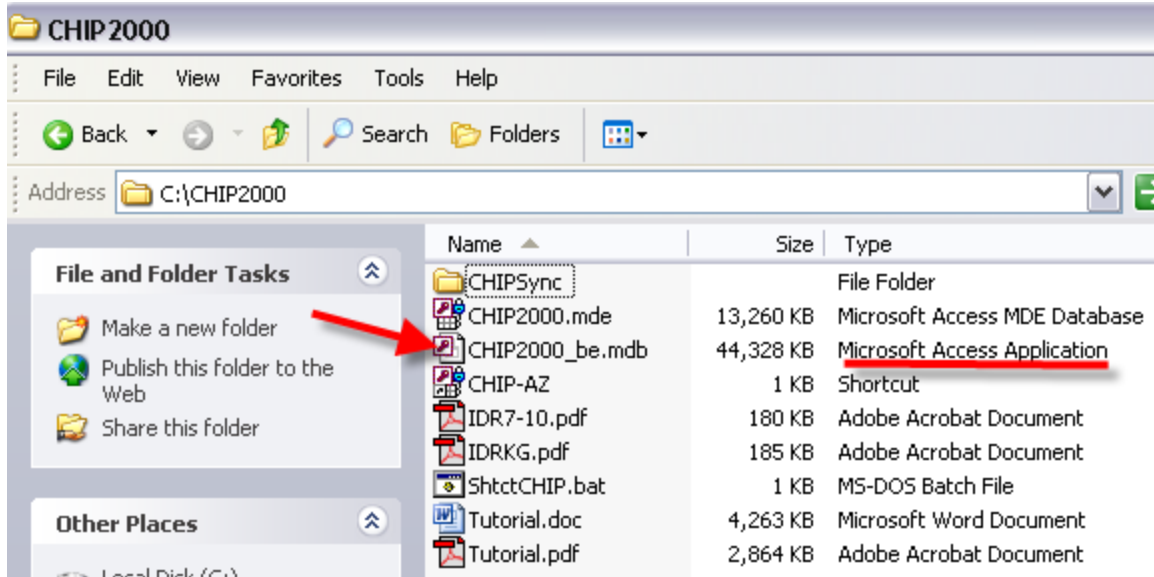
Click **View** and **Details**.



Then expand the CHIP2000 folder with double click.

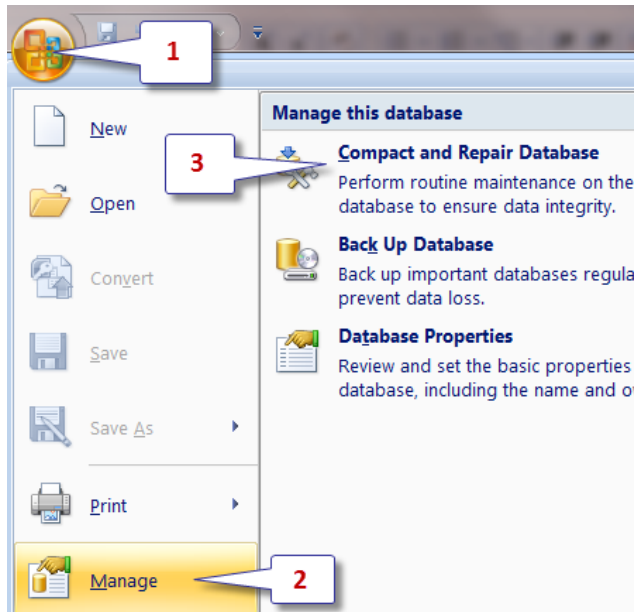
- Next page.

Compact & Repair CHIP-AZ and Backup



- Double click the **CHIP2000_be.mdb** icon. You may not see the ".mdb". If not, be sure that the file Type is Microsoft Access Application.

If MS Access 2007 - From within CHIP-AZ by clicking Office Button, Manage, Compact and Repair Database.



- In the lower left part of your screen you will see a status meter.



- When it disappears and your CHIP2000_be: Database window redisplay, your compact is done. This process could take several minutes the first time. **Be patient.**

Compact & Repair CHIP-AZ and Backup

- Now close Microsoft Access.

Note: If running Microsoft Access 2010 or newer, things are different.
MS Access 2010 - **Select** File, Compact

You will notice that the file size of CHIP2000_be.mdb has dropped significantly. Do not be alarmed. This is expected and desired.